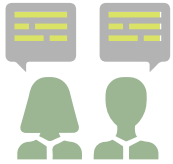


WISCONSIN CPCP CHILD PSYCHIATRY CONSULTATION PROGRAM

WI CPCP BY THE NUMBERS

The Wisconsin Child Psychiatry Consultation Program (WI CPCP) is a state- and federally funded program for primary care providers (PCPs) designed to improve mental health care for children and adolescents. This statewide program is brought to you by the Wisconsin Department of Health Services (DHS) in partnership with the Medical College of Wisconsin (MCW).

Provider engagement | July 2024 – June 2025



1,390

WI CPCP
consults to
providers

697

Hours of provider
education completed

284

Providers who joined
WI CPCP this year



Services offered to primary care providers

EDUCATION

The WI CPCP offers Continuing Medical Education (CME) online education, case studies and practice application, and mental health conferences.

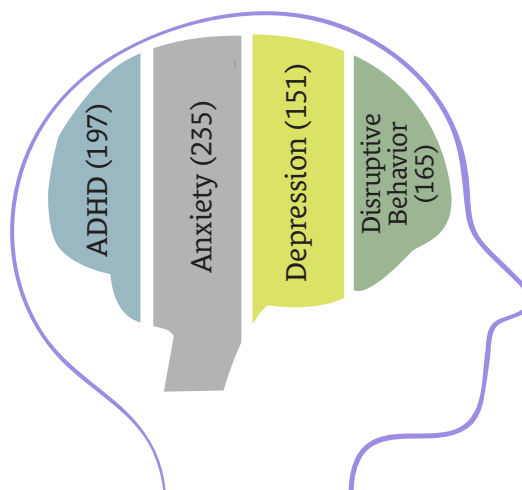
CONSULTATION

The WI CPCP team is available to answer questions relating to pediatric mental health by phone or email Monday through Friday, 8 a.m.–5 p.m.

RESOURCE COORDINATION

The WI CPCP offers resource support to ensure timely referrals to appropriate services within local communities.

Frequent topics for which providers request consults



Top medicine-related provider questions

632	side effect profile
571	initiation of new medication
464	dosage of new medication
328	medication increase

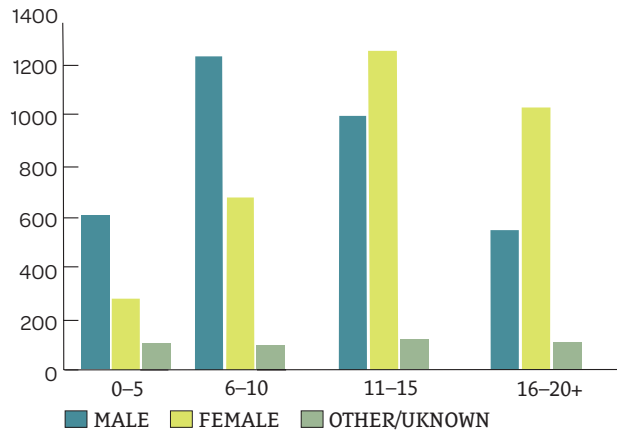
To obtain the dedicated email address and phone number for WI CPCP and to gain access to online CE modules, please visit the WI CPCP website at **WICPCP.org** and complete the provider participation form located on the 'join' tab at the top of the home page.

WI CPCP BY THE NUMBERS

AGES & GENDERS SERVED

14,420

Total consults
since program
inception

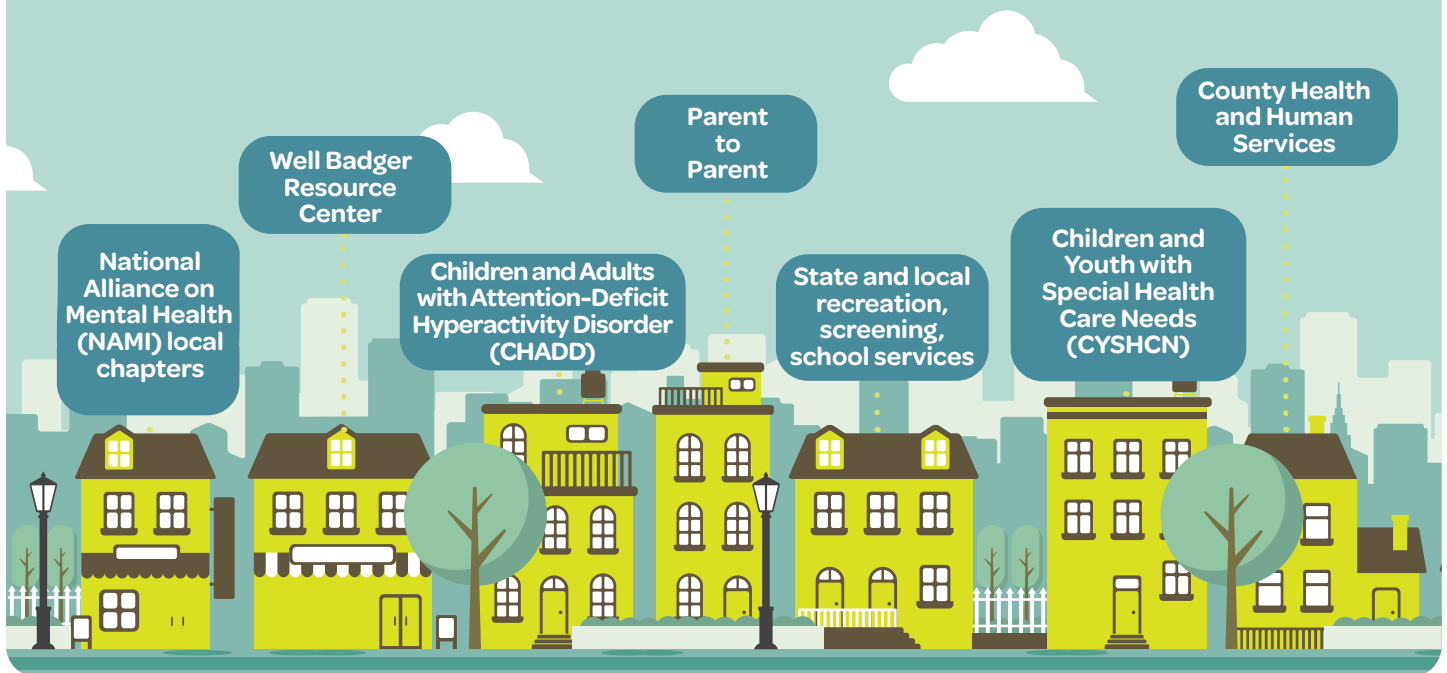


2,766

Total participating
providers



COMMUNITY RESOURCES OFTEN RECOMMENDED TO PROVIDERS



WI CPCP TEAM

Mental Health Clinicians

Robert Chayer, MD
Gabriella Hangiandreou, MD
Matt Jandrisevits, PhD
Martha Karlstad, MD
Rosa Kim, MD
Jon Lehrmann, MD
Colleen Manak, MD
Nisha Shah, MD

Program Manager

Elizabeth Nelson

DHS Contract Administrator

Heidi Massey

Data Evaluator

Michelle Broadus, PhD

Administrative Assistant

Andrea Zimmerman

Program Coordinators

Melissa Hayes
Kristen Krause
Christina Lium
Grace Bayer

Psychiatric Nurse

Kim Nesseth, RN



For more information on WI
CPCP, please visit WICPCP.org



**WISCONSIN DEPARTMENT
of HEALTH SERVICES**

P-01847 (09/2025)

This statewide program is brought to you by the Wisconsin Department of Health Services in partnership with the Medical College of Wisconsin.

Funded by the Wisconsin Department of Health Services, Wis. Stat. §§ 20.435 and 51.442, and in part from the Health Resources and Services Administration (HRSA) of the U.S. Department of Health and Human Services (HHS) as part of a 3-year cooperative agreement.